

五育中学 (10月月考)

一. 选择题

1. 5 B. B. C. B. C 6. D D. C. D. D. B

二. 填空题

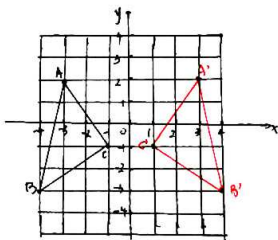
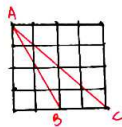
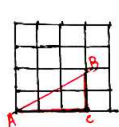
11. 4 12. 5 13. 4 14. 4.2 15. 49 16. (3,0)

三. 解答题

17. (1) $4\sqrt{7}$ (2) $3\sqrt{3}$ (3) $\frac{2\sqrt{6}}{3}$ (4) $\frac{\sqrt{2}}{2}$

18. (1) $-4\sqrt{2}$ (2) -2 (3) 0 (4) $9-2\sqrt{2}$

19. 如图所示, $\triangle ABC$ 为所求



20.

(1) A (-3, 2) B (-4, -1) C (-1, -1)

(2) $B_1 (4, -1)$ 如图所示:

21.

$$C_{\triangle ABC} = 48$$

22.

(1) A (-3, 0) B (0, 0) C (-2, -2) D (1, -3) E (-4, 2)

(2)

$$S_{\triangle ADE} = \frac{4 \times 3}{2} = 6$$

23.

P点坐标为 (0, 0), 如图所示:

$$|AB| = \sqrt{4^2 + 4^2} = 4\sqrt{2}$$

